

Acute TravelLogic logic analyzer

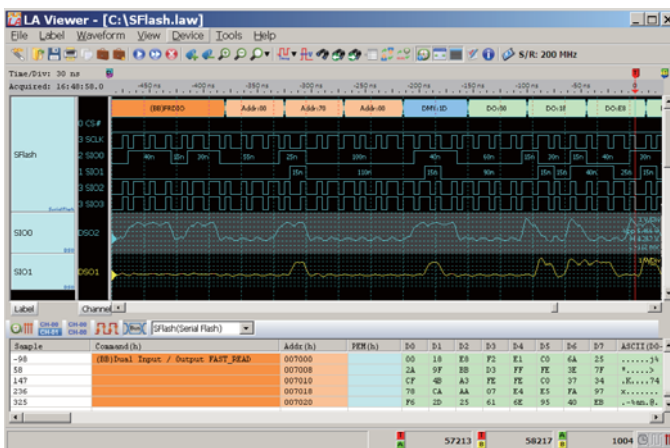
- PC-based
- USB2.0 interface / powered
- 36 channels
- 4 GHz timing / 200 MHz state analysis
- 4-conditions (4 levels each) trigger
- Data Logger (HD storage)
- Transitional Storage / Qualified Storage
- Input Sensitivity 0.25Vpp
- Stackable with Acute or other brand DSO to form an MSO
- Trigger Group I : CAN, I²C, I²S, LPC, SPI, SVI2, SVID, UART, ...
- Trigger Group II : eMMC 4.5, NAND Flash, SD 3.0, Serial Flash
- Bus Decode : CAN, eMMC, I²C, I²S, NAND Flash, PMBus, SD, SMBus, SPI, SVI2, SVID, UART, USB1.1, ... (60+ decodes)



123 x 76 x 21 mm³

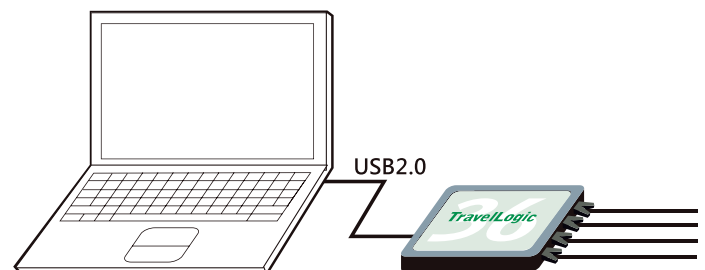
Model	Memory	Trigger
TL2136B	18 Mb	Group I
TL2236B	72 Mb	Group I
TL2236B ⁺	72 Mb	Group I, II

Software Window



System Requirements

- USB 2.0 port
- XP, Vista, Win 7, Win 8 (32 / 64 bits)



Acute

PC-based T&M Instruments

Acute Technology Inc.

Tel: 886-2-2999-3275 Fax: 886-2-2999-3276 E-mail: service@acute.com.tw <http://www.acute.com.tw>



TravelLogic series

Model		TL2136B	TL2236B	TL2236B+
Power	Power Source	USB bus-power (+5V)		
	Static Power Dissipation	0.75W		
	Max Power Dissipation	<2.5W		
Hardware Interface		USB2.0 (USB1.1 Compatible)		
Timing Analysis (Asynchronous, Max. Sample Rate)		4 GHz		
State Clock Rate (synchronous, External Clock)		200 MHz		
Transitional Storage		Multi channel (55 bits at 5 ns resolution/5.7 years duration)		
Qualified Storage		Only supports Transitional Storage		
Channels (Signal/Ground)		36/4		
Total Sample Memory		18M bits	72M bits	
Memory (bits) per channel vs. number of channels available	Timing Analysis	Memory (bits) per channel/number of channels available		
	4 GHz	2.5K/36		
	2 GHz	5K/36		
	1.6 GHz	4M/4	16M/4	
	800 MHz	2M/9	8M/9	
	400 MHz	1M/18	4M/18	
	200 MHz	512K/36, 1M/18	2M/36, 4M/18,	
		1.5M/12, 2M/9	6M/12, 8M/9,	
		3M/6, 4.5M/4	12M/6, 18M/4,	
	9M/2, 18M/1	36M/2, 72M/1		
Resolution	250ps			
Channels	36			
Conditions	Yes (4)			
Levels for each Condition	Yes (16)			
Pre/Post Trigger Setting	Yes			
Pass Counter	Yes (0 ~ 1048575 times)			
Event Types	Word, Channel, Transition, Glitch, Width, Comparison, Time-out			
Bus Trigger I	CAN, I ² C, I ² S, LPC, SPI, SVI2, SVID, UART, ...			
Bus Trigger II	—	eMMC 4.5, NAND Flash, SD 3.0, Serial Flash		
Input Port (for Stack)	TTL 3.3V			
Output Port (for Stack)	TTL 3.3V			
Threshold	Range	+6V ~ -6V		
	Resolution	50mV		
	Accuracy	±100mV + 5%*Vth		
	Schmitt Trigger	Yes (Dual Threshold Mode)		
Input Voltage	Maximum	±40V DC, 15Vpp AC		
	Sensitivity	0.25Vpp @50MHz, 0.5Vpp @150MHz, 0.8Vpp @250MHz		
Impedance		200KΩ// <5pF		
Temperature	Operating/Storage Temperature	5°C ~ 45°C (41°F ~ 113°F)/-10°C ~ 65°C (14°F ~ 149°F)		
Channel to channel skew		< 1ns		
Software Features	Zoom In/Out	Yes (Scroll the mouse wheel)		
	Languages	English/Traditional Chinese/Simplified Chinese		
	Waveform Height	Adjustable		
	Zoom Window/Report Window	Yes		
	Quick Cursor-positioning	Yes		
	Import Label(s)	Yes		
	Quick Bus Decode Setup	Yes		
	Trigger cursor/Auxiliary cursors	1/25		
	Data Logger	Saved to Hard Disk		
	Bus Decode	1-Wire, 3-Wire, 7-Segment, A/D Converter, APML, CAN, Close Caption, CEC, DALI, DMX512, DP-Aux, FlexRay, HD Audio, HDQ, HDMI-DDC(EDID), I ² C, I ² C EEPROM, I ² S, I80, IDE, Indicator, ITU656(CCIR656), IrDA, JTAG, LCD1602, LIN, Lissajous, LPC, Math, MDIO, MHL-CBUS, Microwire, MII(RMII), MMC(eMMC), Modbus, NAND Flash, NEC IR, PECE, PMBus, PS/2, PWM, Qi, RC-5, RC-6, SDIO(SD3.0), Serial Flash, Serial IRQ, SGPIO, Smart Card(ISO7816), SMBus, SMI, S/PDIF, SPI, SSI, ST7669, SWD, SWP, SVI2, SVID, UART, UNI/O, USB 1.1, ...		
Line Decoding	Biphase Mark, Differential-Manchester, Manchester (Thomas, IEEE802.3), Miller, Modified Miller, NRZI, ...			
Line Encoding	AMI (Standard, B8ZS, HDB3), Biphase Mark, CMI, Differential-Manchester, Manchester (Thomas, IEEE802.3), MLT-3, Miller, Modified Miller, NRZI, Pseudoternary, ...			
Dimension	Length x Width x Height (mm ³)	123 x 76 x 21 (mm ³)		
Lead Cable		A 40-pin lead cable (36 Signal + 4 Ground)		
Grippers		40		

Acute

Acute Technology Inc.

PC-based T&M Instruments Tel: 886-2-2999-3275 Fax: 886-2-2999-3276 E-mail: service@acute.com.tw http://www.acute.com.tw